

PRELIMINARY

M63840P/FP/KP

8-Unit 500mA Source Type Darlington Transistor-Array With Clamp Diode

\* Notice: This is not a final specification.  
Some parametric limits are subject to change.

DESCRIPTION

M63840P/FP/KP are eight-circuit output-sourcing Darlington transistor array. The circuits are made of PNP and NPN transistors. Both the semiconductor integrated circuits perform high-current driving with extremely low input-current supply.

FEATURES

- High breakdown voltage ( $BV_{CEO} \geq 40V$ )
- High-current driving ( $I_o(max) = -500mA$ )
- With output clamping diodes
- Driving available with TTL output or C-MOS IC output
- Wide operating temperature range ( $T_a = -40 \sim +85^\circ C$ )
- Output current-sourcing type

APPLICATION

Drives of relays, printers, LEDs, fluorescent display tubes and lamps. and interfaces between MOS-bipolar logic systems and relays, solenoids, of small motors.

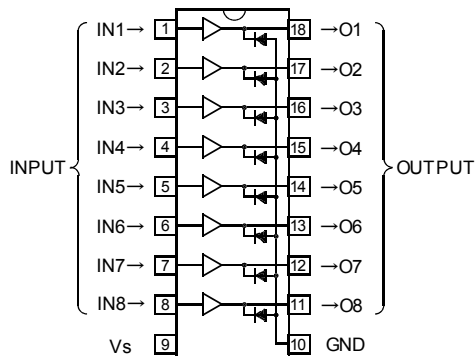
FUNCTION

The M63840P/FP/KP each have eight circuits, which are made of input inverters and current-sourcing outputs. The output are made of PNP transistors and NPN Darlington transistors. The PNP transistor base current is constant. A clamping diode is provided between each output and GND.  $V_s$  and GND are used commonly among the eight circuits.

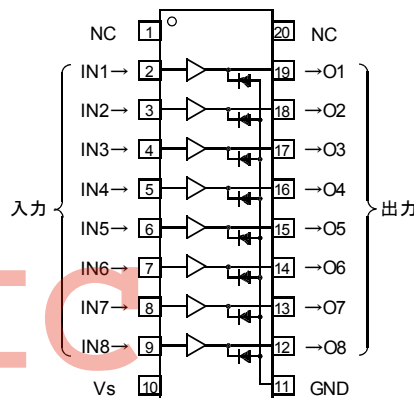
The inputs have resistance of  $10k\Omega$ , and voltage of up to 15V is applicable. Output current is 500mA maximum. Supply voltage  $V_s$  is 40V maximum.

The M63840FP/KP is enclosed in a molded small flat package, enabling space-saving design.

PIN CONFIGURATION (TOP VIEW)



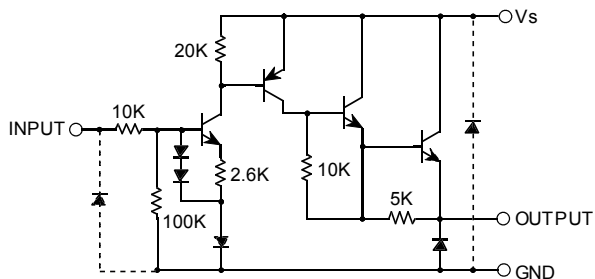
Package type 18P4G(P)



Package type 20P2N-A(FP)  
20P2E-A(KP)

NC: No connection

CIRCUIT DIAGRAM (EACH CIRCUIT)



The eight circuits share  $V_s$  and GND.

The diode, indicated with the dotted line, is parasitic, and cannot be used.

Unit:  $\Omega$

# M63840P/FP/KP

## 8-Unit 500mA Source Type Darlington Transistor-Array With Clamp Diode

ABSOLUTE MAXIMUM RATINGS (Unless otherwise noted, Ta= -40~+85°C)

Symbol	Parameter	Conditions	Ratings	Unit	
V <sub>CEO</sub>	Collector-emitter v oltage	Output, L	-0.5~+40	V	
V <sub>S</sub>	Supply v oltage		40	V	
V <sub>I</sub>	Input v oltage		-0.5~+15	V	
I <sub>O</sub>	Output current	Current per circuit output, H	-500	mA	
I <sub>F</sub>	Clamping diode forward current		-500	mA	
V <sub>R</sub>	Clamping diode reverse v oltage		35	V	
P <sub>d</sub>	Power dissipation	Ta= 25°C, when mounted on board	M63840P	1.79	W
			M63840FP	1.10	
			M63840KP	0.68	
T <sub>opr</sub>	Operating temperature		-40~+85	°C	
T <sub>stg</sub>	Storage temperature		-55~+125	°C	

RECOMMENDED OPERATING CONDITIONS (Unless otherwise noted, Ta= -40~+85°C)

Symbol	Parameter	Limits			Unit	
		min	typ	max		
V <sub>S</sub>	Supply v oltage	0	-	40	V	
I <sub>O</sub>	Output current (Current per 1 circuit when 8 circuits are coming on simultaneously)	Duty Cycle P: no more then 10% FP: no more then 5% KP: no more then 3%	0	-	-350	mA
			0	-	-100	
V <sub>IH</sub>	"H" input v oltage	2.0	-	12	V	
V <sub>IL</sub>	"L" input v oltage	0	-	0.8	V	

ELECTRICAL CHARACTERISTICS (Unless otherwise noted, Ta= 25°C)

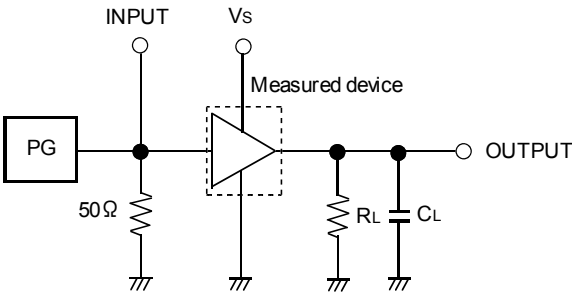
Symbol	Parameter	Test conditions	Limits			Unit
			min	typ	max	
I <sub>S(leak)</sub>	Supply leak current	V <sub>S</sub> = 40V, V <sub>I</sub> = 0.8V	-	-	100	μA
V <sub>CE(sat)</sub>	Collector-emitter saturation v oltage	V <sub>S</sub> = 10V, V <sub>I</sub> = 2V, I <sub>O</sub> = -350mA	-	1.7	2.0	V
		V <sub>S</sub> = 10V, V <sub>I</sub> = 2V, I <sub>O</sub> = -100mA	-	1.5	1.8	
I <sub>I</sub>	Input current	V <sub>I</sub> = 2.4V	-	36	52	μA
		V <sub>I</sub> = 3.85V	-	180	260	
I <sub>S</sub>	Supply current	V <sub>S</sub> = 40V, V <sub>I</sub> = 2V (per 1 circuit)	-	-	2.5	mA
V <sub>F</sub>	Clamping diode forward v oltage	I <sub>F</sub> = 350mA	-	1.3	2.0	V
I <sub>R</sub>	Clamping diode reverse current	V <sub>R</sub> = 40V	-	-	100	μA

SWITCHING CHARACTERISTICS (Unless otherwise noted, Ta= 25°C)

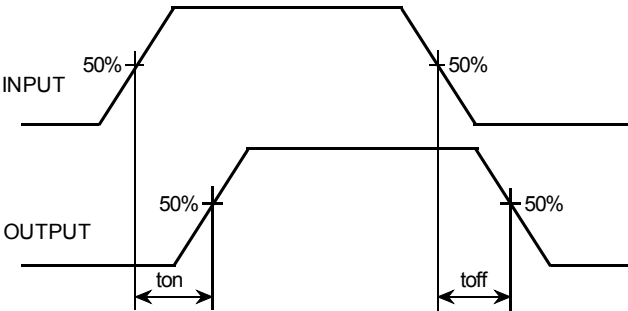
Symbol	Parameter	Test conditions	Limits			Unit
			min	typ	max	
t <sub>on</sub>	Turn-on time	C <sub>L</sub> = 15pF (note 1)	-	180	-	ns
t <sub>off</sub>	Turn-off time		-	2200	-	ns

8-Unit 500mA Source Type Darlington Transistor-Array With Clamp Diode

NOTE 1 TEST CIRCUIT

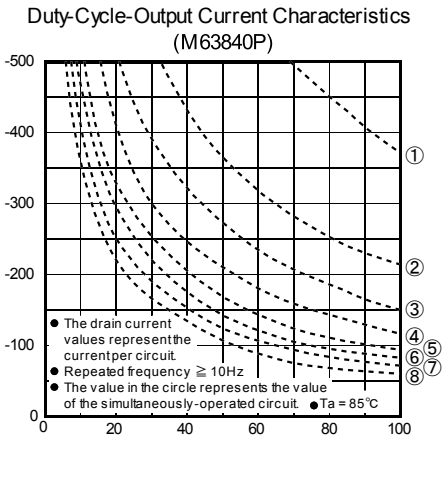
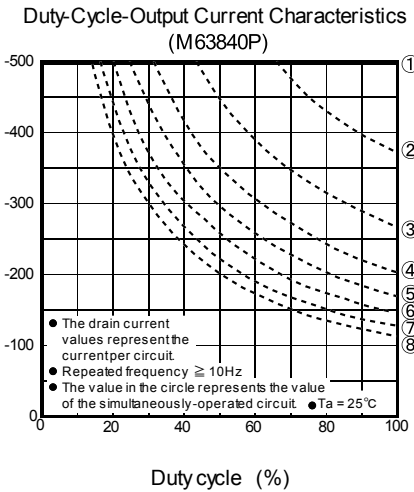
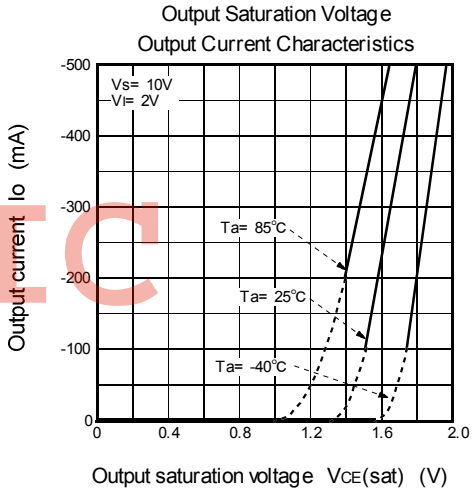
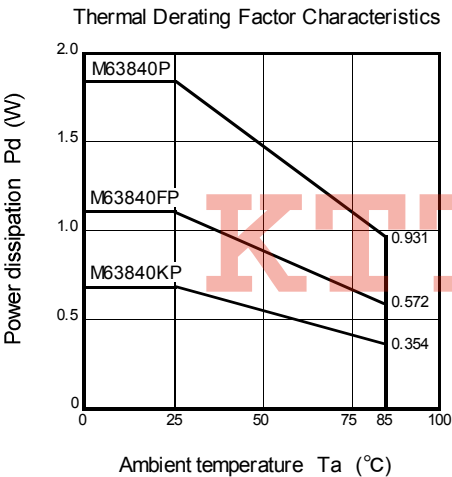


TIMING DIAGRAM



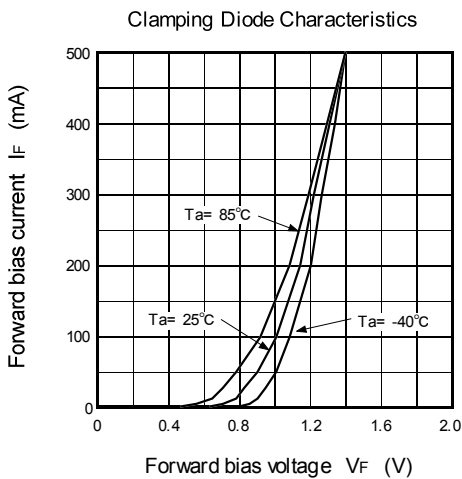
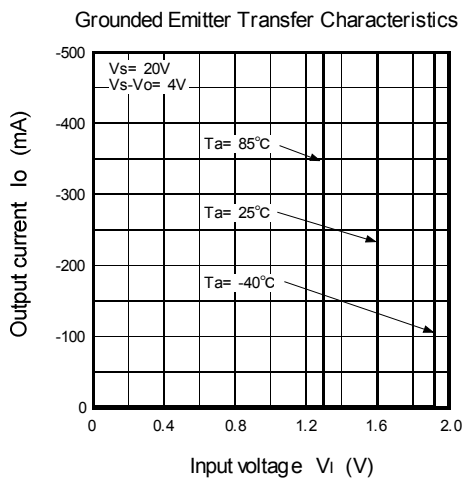
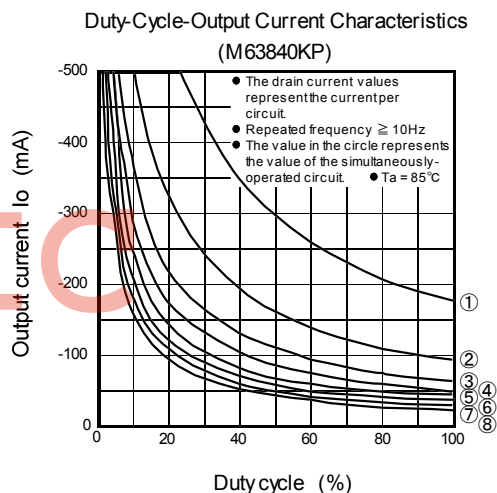
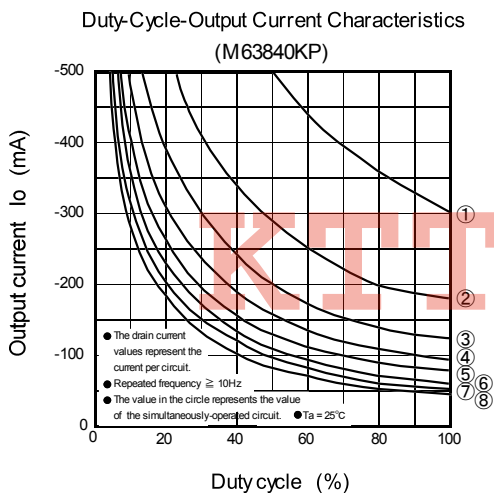
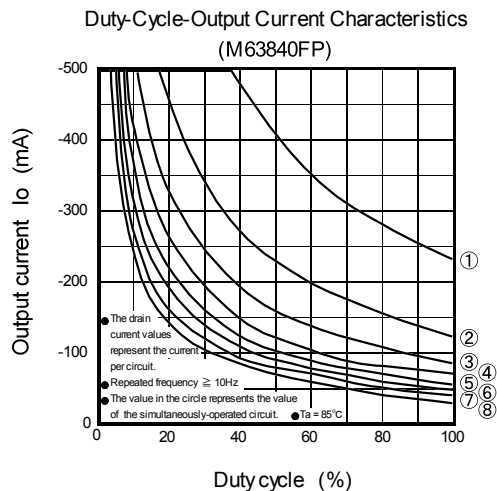
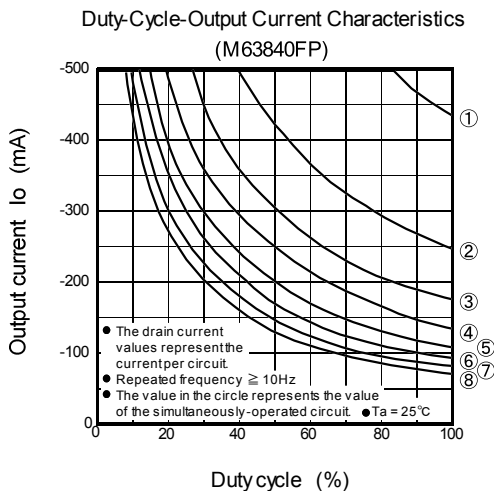
- (1) Pulse generator (PG) characteristics: PRR= 1KHz,  $t_w = 10 \mu s$ ,  $t_r = 6ns$ ,  $t_f = 6ns$ ,  $Z_o = 50 \Omega$ ,  $V_i = 0 \sim 2.4V$
- (2) Input-output conditions:  $R_L = 100 \Omega$ ,  $V_s = 40V$
- (3) Electrostatic capacity  $C_L$  includes floating capacitance at connections and input capacitance at probes.

TYPICAL CHARACTERISTICS



# M63840P/FP/KP

## 8-Unit 500mA Source Type Darlington Transistor-Array With Clamp Diode

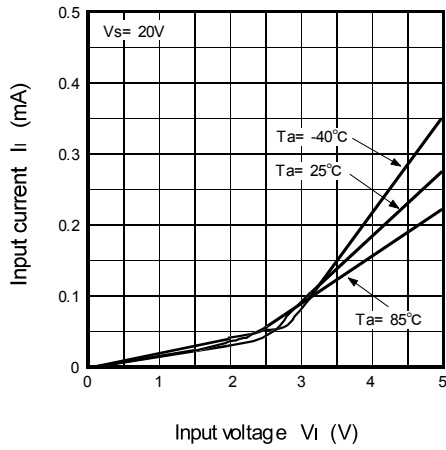


# M63840P/FP/KP

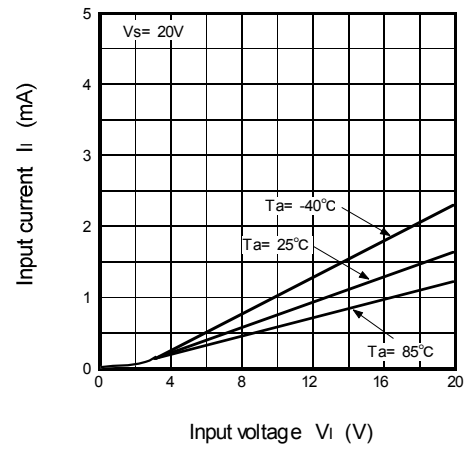
## 8-Unit 500mA Source Type Darlington Transistor-Array With Clamp Diode

---

Input Characteristics



Input Characteristics



KTTIC

M63840P/FP/KP

8-Unit 500mA Source Type Darlington Transistor-Array With Clamp Diode

**18P4G**

Plastic 18pin 300mil DIP

EIAJ Package Code DIP18-P-300-2.54	JEDEC Code -	Weight(g) 1.3	Lead Material Cu Alloy
---------------------------------------	-----------------	------------------	---------------------------

Symbol	Dimension in Millimeters		
	Min	Nom	Max
A	-	-	4.5
A1	0.51	-	-
A2	-	3.3	-
b	0.4	0.5	0.6
b1	1.1	1.2	1.5
c	0.2	0.25	0.32
D	23.8	24.0	24.2
E	6.15	6.3	6.45
e	-	2.54	-
e1	-	7.62	-
L	3.0	-	-
θ	0°	-	15°

**20P2N-A**

(MMP)

Plastic 20pin 300mil SOP

EIAJ Package Code SOP20-P-300-1.27	JEDEC Code -	Weight(g) 0.26	Lead Material Cu Alloy
---------------------------------------	-----------------	-------------------	---------------------------

Symbol	Dimension in Millimeters		
	Min	Nom	Max
A	-	-	2.1
A1	0	0.1	0.2
A2	-	1.8	-
b	0.35	0.4	0.5
c	0.18	0.2	0.25
D	12.5	12.6	12.7
E	5.2	5.3	5.4
e	-	1.27	-
HE	7.5	7.8	8.1
L	0.4	0.6	0.8
L1	-	1.25	-
Z	-	0.585	-
Z1	-	-	0.735
x	-	-	0.25
y	-	-	0.1
θ	0°	-	8°
b2	-	0.76	-
e1	-	7.62	-
l2	1.27	-	-

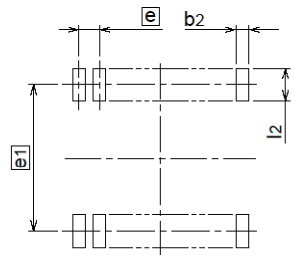
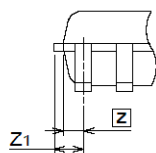
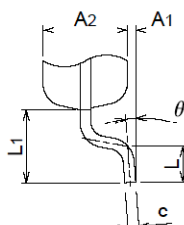
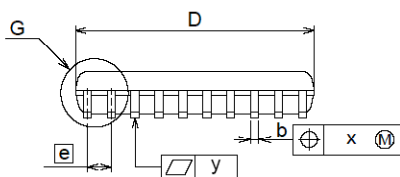
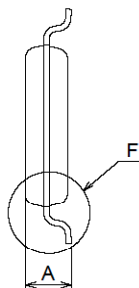
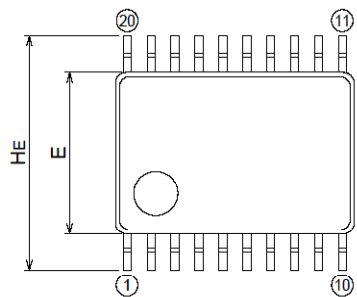
M63840P/FP/KP

8-Unit 500mA Source Type Darlington Transistor-Array With Clamp Diode

20P2E-A

Plastic 20pin 225mil SSOP

EIAJ Package Code	JEDEC Code	Weight(g)	Lead Material
SSOP20-P-225-0.65	-	0.08	Alloy 42



Recommended Mount Pad

Symbol	Dimension in Millimeters		
	Min	Nom	Max
A	-	-	1.45
A1	0	0.1	0.2
A2	-	1.15	-
b	0.17	0.22	0.32
c	0.13	0.15	0.2
D	6.4	6.5	6.6
E	4.3	4.4	4.5
e1	-	0.65	-
HE	6.2	6.4	6.6
L	0.3	0.5	0.7
L1	-	1.0	-
Z	-	0.325	-
Z1	-	-	0.475
x	-	-	0.13
y	-	-	0.1
theta	0°	-	10°
b2	-	0.35	-
e1	-	5.8	-
l2	1.0	-	-

