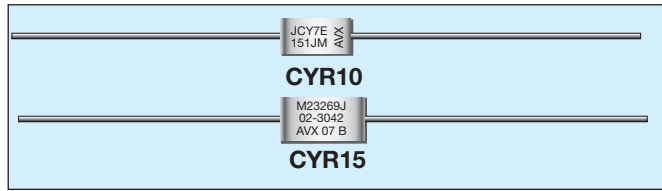
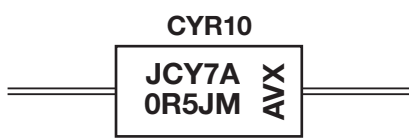




MIL-PRF-23269

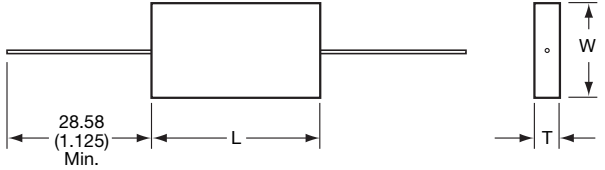


MARKING



J = JAN Trademark
 C = Capacitor
 Y = Glass Dielectric
 7 = Last digit of year
 A = 4 week lot code

OR5 = Capacitance code –
 OR5 = 0.5pF
 J = Capacitance tolerance –
 J = ±5%, G = ±2%, F = ±1%
 M = Failure level
 AVX = AVX Corporation



DIMENSIONS:

millimeters (inches)

Case Size	L	W	T	Lead Dia. +0.1(+0.004) -0.03(±0.001)
CYR10	8.74 ± 1.19 (0.344 ± 0.047)	4.37 ± .79 (0.172 ± 0.031)	1.98 ± .79 (0.078 ± 0.031)	.51 (0.020)
CYR15	11.91 ± 1.19 (0.469 ± 0.047)	6.76 ± .79 (0.266 ± 0.031)	2.77 ± 1.19 (0.109 ± 0.047)	.51 (0.020)

Note: Standard leads are solder-coated Dumet.

CYR15



M23269 = Military specification established reliability glass capacitor
 J = JAN Trademark
 02 = Case size (CYR15)
 3 = Failure rate (M level)

057 = Dash Number – (capacitance in pF and capacitance tolerance)
 AVX = AVX Corporation
 07 = Year
 B = Lot Code

HOW TO ORDER

M23269 /
 Style
 Military Specification
 Established Reliability
 Glass Capacitor

01 – **3**
 Case Size
 01 = CYR10
 02 = CYR15

Failure Rate
 3 = M level 1%/1000 hrs.
 7 = S level .001%/1000 hrs.
 (100 volt rating only)

001
 Capacitance Code
 Capacitance value coded in accordance with MIL-PRF-23269 – (see Part Number section)

RATINGS & PART NUMBER REFERENCE

Cap. Value (pF)	Part Number* Capacitance Tolerance		
CYR10 M23269/01-			
500 Volts**	±.25pF	±.5pF	±5%
.5	+ .001	-	-
1.0	- .002	-	-
1.5	- .003	-	-
2.2	- .004	+ .005	-
2.7	- .006	-	-
3.0	- .007	- .008	-
3.3	- .009	-	-
3.6	- .010	- .011	-
3.9	- .012	-	-
4.3	- .013	- .014	-
4.7	- .015	-	-
5.1	- .016	-	-
5.6	- .017	-	+ .018
6.2	- .019	-	- .020
6.8	- .021	-	- .022
7.5	- .023	-	- .024
8.2	- .025	-	- .026
9.1	- .027	-	- .028
10	- .029	-	- .030
11	- .031	-	- .032
12	- .033	-	- .034

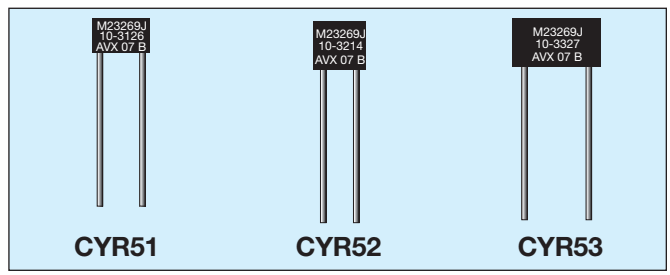
Cap. Value (pF)	Part Number* Capacitance Tolerance		
CYR10 M23269/01- (cont'd.)			
500 Volts**	±1%	±2%	±5%
13	-	+ .035	+ .036
15	-	- .037	- .038
16	-	- .039	- .040
18	-	- .041	- .042
20	-	- .043	- .044
22	-	- .045	- .046
24	-	- .047	- .048
27	+ .049	- .050	- .051
30	- .052	- .053	- .054
33	- .055	- .056	- .057
36	- .058	- .059	- .060
39	- .061	- .062	- .063
43	- .064	- .065	- .066
47	- .067	- .068	- .069
51	- .070	- .071	- .072
56	- .073	- .074	- .075
62	- .076	- .077	- .078
68	- .079	- .080	- .081
75	- .082	- .083	- .084
82	- .085	- .086	- .087
91	- .088	- .089	- .090
100	- .091	- .092	- .093
110	- .094	- .095	- .096
120	- .097	- .098	- .099
130	- .100	- .101	- .102
150	- .103	- .104	- .105
160	- .106	- .107	- .108
180	- .109	- .110	- .111
200	- .112	- .113	- .114

Cap. Value (pF)	Part Number* Capacitance Tolerance		
CYR10 M23269/01- (cont'd.)			
300 Volts**	±1%	±2%	±5%
220	- .115	- .116	- .117
240	- .118	- .119	- .120
270	- .121	- .122	- .123
300	- .124	- .125	- .126
CYR15 M23269/02-			
500 Volts**	±1%	±2%	±5%
220	+ .001	+ .002	+ .003
240	- .004	- .005	- .006
270	- .007	- .008	- .009
300	- .010	- .011	- .012
330	- .013	- .014	- .015
360	- .016	- .017	- .018
390	- .019	- .020	- .021
430	- .022	- .023	- .024
470	- .025	- .026	- .027
510	- .028	- .029	- .030
300 Volts**	±1%	±2%	±5%
560	- .031	- .032	- .033
620	- .034	- .035	- .036
680	- .037	- .038	- .039
750	- .040	- .041	- .042
820	- .043	- .044	- .045
910	- .046	- .047	- .048
1,000	- .049	- .050	- .051
1,100	- .052	- .053	- .054
1,200	- .055	- .056	- .057

* Add first digit to indicate failure rate.
 ** S LEVEL = 100V rating for all values.

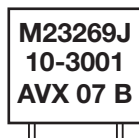
Glass Dielectric Capacitors

MIL-PRF-23269

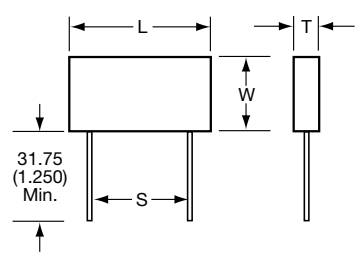


MARKING

CYR51, 52, 53



M23269 = Military specification established reliability glass capacitor
 J = JAN Trademark
 10 = Slash sheet for case sizes – CYR51, CYR52, CYR53
 3 = Failure rate (M level)
 001 = Capacitance value coded in accordance with MIL-C-23269
 AVX = AVX Corporation
 07 = Year
 B = Lot Code



DIMENSIONS: millimeters (inches)

Case Size	L ±0.13 (±0.005)	W ±0.25 (±0.010)	T ±0.13 (±0.005)	S ±0.51 (±0.020)	Lead Dia. ±0.051 (±0.002)
CYR51	7.62 (0.300)	5.08 (0.200)	2.92 (0.115)	5.08 (0.200)	.51 (0.020)
CYR52	7.62 (0.300)	7.62 (0.300)	2.92 (0.115)	5.08 (0.200)	.51 (0.020)
CYR53	12.70 (0.500)	7.62 (0.300)	2.92 (0.115)	10.16 (0.400)	.51 (0.020)

Note: Leads are solderable and weldable gold-plated Dumet, per MIL-STD-1276, Type D.

CROSS REFERENCE

MIL-C-23269 Style	MIL-C-11272 Style
CYR10	CY10
CYR15	CY15
CYR20	CY20
CYR30	CY30
CYR51	CY06
CYR52	CY07
CYR53	CY08

HOW TO ORDER

M23269

Style
 Military Specification
 Established Reliability
 Glass Capacitor

10 / **KTTIC** / **3**

Case Size
 Slash sheet
 CYR51
 CYR52
 CYR53

Failure Rate
 3 = M level, 1%/1000 hrs.

001

Capacitance Code
 Capacitance value
 coded in accordance
 with MIL-C-23269 –
 (see Part Number section)

RATINGS & PART NUMBER REFERENCE

Cap. Value (pF)	Part Number Capacitance Tolerance		
	±25pF	±2%	±5%
CYR51 M23269/10-			
300 Volts			
1	3001	—	—
1.5	3002	—	—
2.2	3003	—	—
2.7	3004	—	—
3.0	3005	—	—
3.3	3006	—	—
3.6	3007	—	—
3.9	3008	—	—
4.3	3009	—	—
4.7	3010	—	—
5.1	3011	—	3012
5.6	3013	—	3014
6.2	3015	—	3016
6.8	3017	—	3018
7.5	3019	—	3020
8.2	3021	—	3022
9.1	3023	—	3024
10	3025	—	3026
11	3027	—	3028
12	3029	—	3030
13	3031	3032	3033
15	3034	3035	3036
16	3037	3038	3039
18	3040	3041	3042
20	3043	3044	3045
22	3046	3047	3048
24	3049	3050	3051

Cap. Value (pF)	Part Number Capacitance Tolerance		
	±1%	±2%	±5%
CYR51 M23269/10- (cont'd)			
300 Volts			
27	3052	3053	3054
30	3055	3056	3057
33	3058	3059	3060
36	3061	3062	3063
39	3064	3065	3066
43	3067	3068	3069
47	3070	3071	3072
51	3073	3074	3075
56	3076	3077	3078
62	3079	3080	3081
68	3082	3083	3084
75	3085	3086	3087
82	3088	3089	3090
91	3091	3092	3093
100	3094	3095	3096
110	3097	3098	3099
120	3100	3101	3102
130	3103	3104	3105
150	3106	3107	3108
160	3109	3110	3111
180	3112	3113	3114
200	3115	3116	3117
220	3118	3119	3120
240	3121	3122	3123
270	3124	3125	3126
300	3127	3128	3129
330	3130	3131	3132
360	3133	3134	3135
390	3136	3137	3138
430	3139	3140	3141
470	3142	3143	3144
510	3145	3146	3147
560	3148	3149	3150

Cap. Value (pF)	Part Number Capacitance Tolerance		
	±1%	±2%	±5%
CYR52 M23269/10-			
300 Volts			
620	3201	3202	3203
680	3204	3205	3206
750	3207	3208	3209
820	3210	3211	3212
910	3213	3214	3215
1,000	3216	3217	3218
CYR53 M23269/10-			
1,100	3301	3302	3303
1,200	3304	3305	3306
1,300	3307	3308	3309
1,500	3310	3311	3312
1,600	3313	3314	3315
1,800	3316	3317	3318
2,000	3319	3320	3321
2,200	3322	3323	3324
2,400	3325	3326	3327

*Add first digit to indicate failure rate.